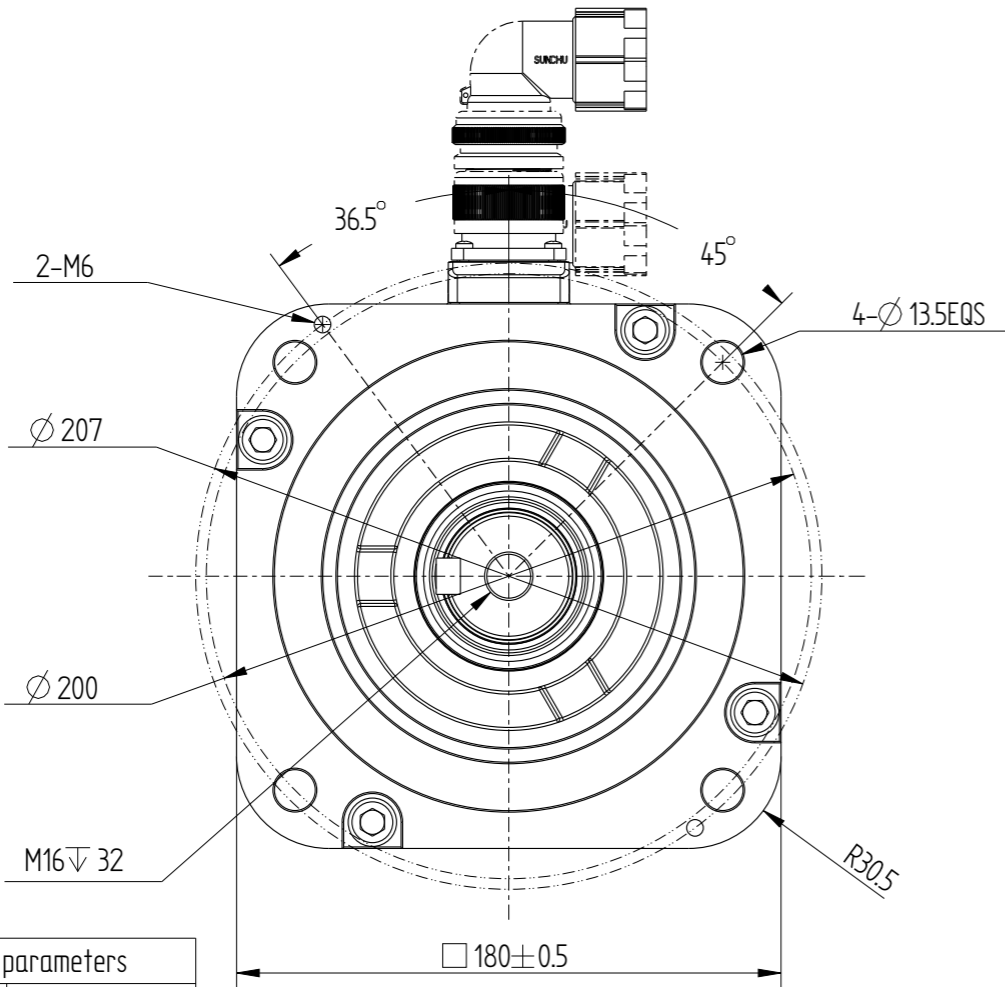
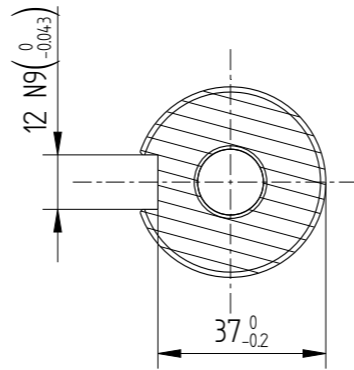
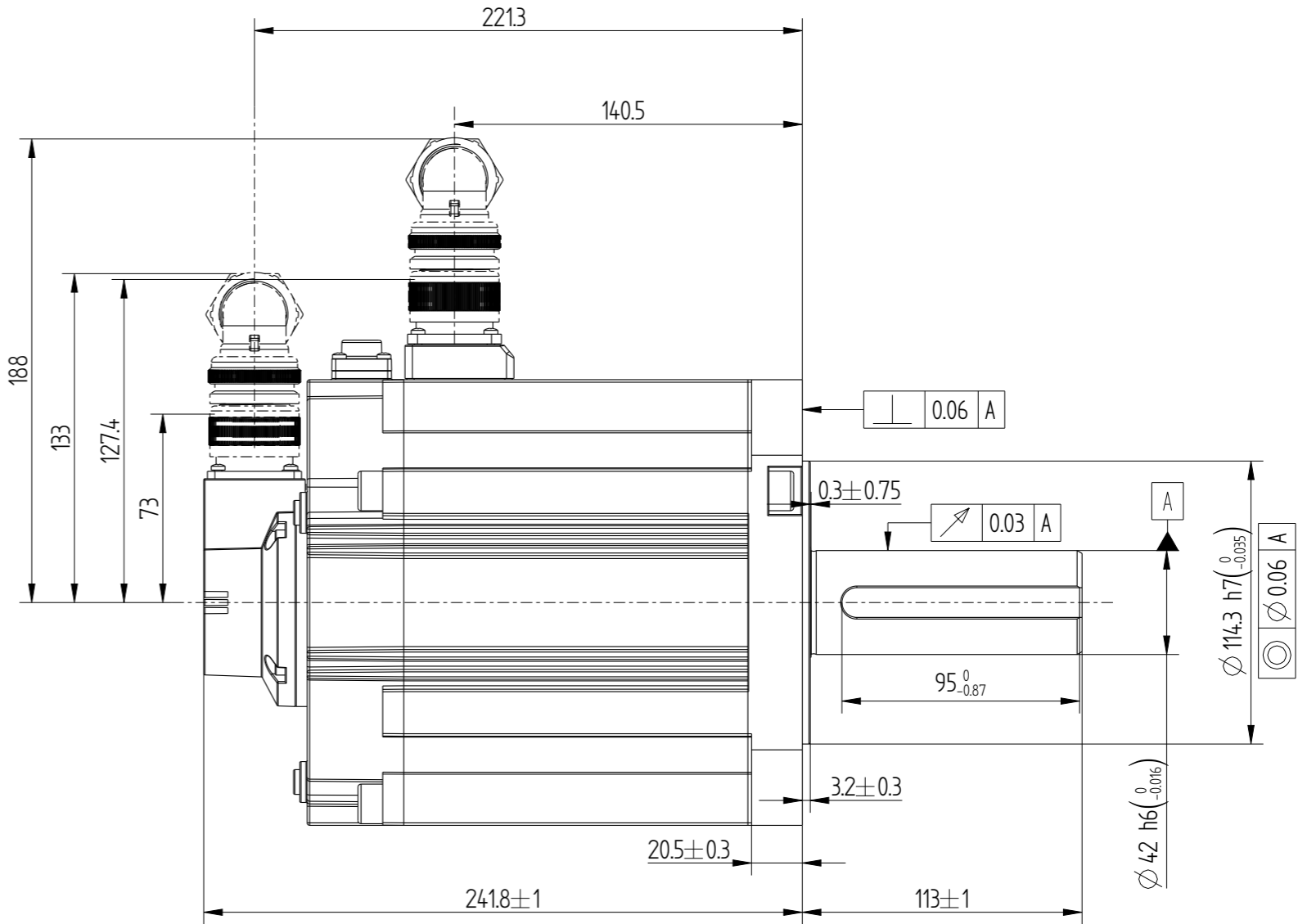
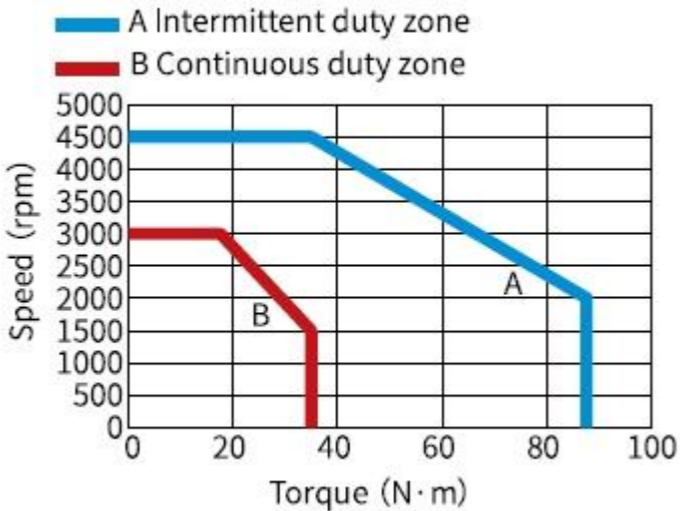


Amendment	Description

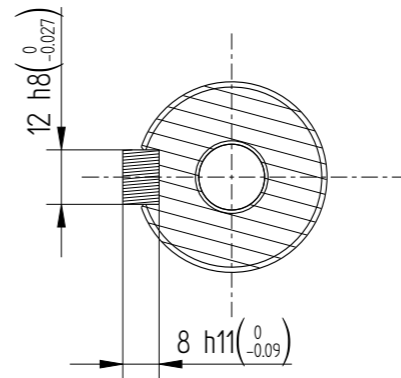
Unit: Millimeter (mm)



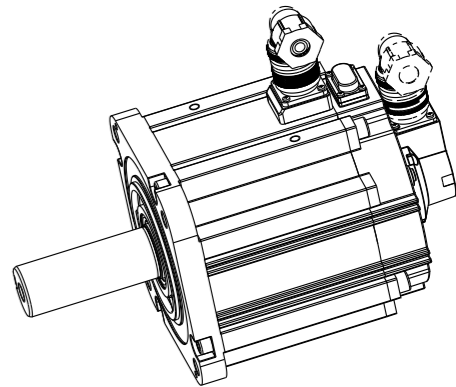
Basic function parameters	
Rated power kW	5.5
Rated voltage V	380
Rated current A	20.7
Peak current at rated speed A	52
Rated torque Nm	35
Peak torque at rated speed Nm	87.6
Rated speed rpm	1500
Max speed rpm	4500
Rotor inertia kg·cm ²	94.55±10%
Encoder resolution	23bit
insulation class	F(155)
Protection level	IP67
Static torque of brake Nm	≥50
Brake power supply V	DC24±10%
duty cycle	S1
Brake backlash°	≤1
Radial load N	≤1764
Axial load N	≤588

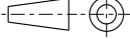


Dimension of shaft end



Dimension of shaft end with key



				Motor Outline Drawing			01118017-WX	
B01	Replace	/	/	/			<div>Mark</div> <div> INOVANCE</div>	
Version	Change method	Change by	Date					
Design	/							
Check	/							
Craft	/							
Verify	/			Weight	Scale	Version	Page 1 of 1	
standardization	/			25.9 kg	25	B01	Model	MS1H3-55C15□-A334R-INT
Approve	/							